

Nata come piccola conceria a conduzione familiare la Dani SpA, frutto della fusione tra Gruppo Dani Spa e Dani Automotive Spa, conta oggi circa 1.000 tra dipendenti e collaboratori. L'azienda, localizzata ad Arzignano (Vicenza), il principale polo conciario nel mondo, produce pelli pregiate di qualità tutta italiana, per le differenti destinazioni merceologiche: automotive, arredamento, information technology, calzatura, pelletteria e abbigliamento.

La completa lavorazione delle pelli in Italia ne garantisce la qualità e la durata nel tempo, grazie al totale controllo dei processi produttivi e delle sostanze impiegate. Questa pelle è inoltre accompagnata da importanti certificazioni ambientali di prodotto, quali l'EPD, la Carbon Footprint e il Blauè Engel.

Dani S.p.A., established as a small family-run tannery, the result of a merger between Gruppo Dani S.p.A. and Dani Automotive S.p.A., now has about 1,000 employees and collaborators. The company based in Arzignano (Vicenza), the world leading tanning centre, produces fine leather with all-Italian quality for various product sectors: automotive, furniture, information technology, footwear, leather goods and clothing. Quality and durability are guaranteed as it is entirely made in Italy, with full control of production processes and the substances used. Moreover, this leather is accompanied by important environmental product certifications, including EPD, Carbon Footprint and Blauè Engel.



www.gruppodani.it

**LE COLLEZIONI PER ARES LINE
ARES LINE COLLECTIONS**

La pelle DANI ha fibre compatte e resistenti; non lascia penetrare la polvere, è elastica ed ha una forte resistenza alla lacerazione.

DANI's leather has compact and resistant fibres; dust cannot penetrate it and it is elastic and highly resistant to tearing.

COSTARICA Prodotto su bovine di origine europea, smerigliato e stampato. Proposto come finitura "entry level" con un ottimo rapporto qualità/prezzo, disponibile in 3 colori.	PANAMA Prodotto su bovine di origine europea, è una pelle pigmentata con grana fine; l'aspetto uniforme permette un'alta versatilità di applicazione su ogni tipologia di seduta. Disponibile in 26 varietà di colore.	FLORIDA Prodotto su tori di origine europea, è una pelle pigmentata, compatta e resistente; l'aspetto regolare e la superficie liscia ne esaltano il tatto setoso. Disponibile in 60 varietà di colore permette di giocare con le cromie presenti in ogni tipologia di ambiente.
--	---	--

Made from European cowhides, is a pigmented and printed type of leather, with an excellent relation between quality and price - available in 3 varieties of colour, in our entry level choice.

Made from European cowhides, is a pigmented fine-grained type of leather, its uniform appearance allows it to be used for a variety of purposes. It is available in 26 varieties of colour.

Made from European bull hides, is a pigmented, compact and resistant type of leather, its uniform appearance and smooth surface enhances its silky feel. It is available in 60 varieties of colour, allowing you to play with the colours of any kinds of spaces.

**CARATTERISTICHE
FEATURES**

COLLEZIONE / COLLECTION	Costarica Pelle/Leather	Panama Pelle/Leather	Florida Pelle/Leather	
Caratteristiche Features	SPESORE (mm) <i>thickness (mm)</i>	0.9-1.1	1.0-1.2	1.2-1.3
Solidità del colore Color fastness	SOLIDITÀ DEL COLORE ALLO STROFINIO A SECCO - 1.000 cicli <i>Dry rub fastness - 1.000 cycles</i>	UNI EN ISO 11640	≥ 4 Scala grigi ≥ 4 <i>Gray Scale</i>	≥ 4 Scala grigi ≥ 4 <i>Gray Scale</i>
	SOLIDITÀ DEL COLORE ALLO STROFINIO A UMIDO - 250 cicli <i>Wet rub fastness - 250 cycles</i>	UNI EN ISO 11640	≥ 4 Scala grigi ≥ 4 <i>Gray Scale</i>	≥ 4 Scala grigi ≥ 4 <i>Gray Scale</i>
	SOLIDITÀ DEL COLORE ALLO STROFINIO CON SUDORE ALCALINO - 80 cicli <i>Alkaline perspiration rub fastness - 80 cycles</i>	UNI EN ISO 11640	≥ 4 Scala grigi ≥ 4 <i>Gray Scale</i>	≥ 4 Scala grigi ≥ 4 <i>Gray Scale</i>
	SOLIDITÀ DEL COLORE ALLA LUCE ARTIFICIALE <i>Light fastness</i>	UNI EN ISO 105-B02	≥ 6 Scala blu ≥ 6 <i>Blue Scale</i>	≥ 6 Scala blu ≥ 6 <i>Blue Scale</i>
Test fisici Physical property	ADESIONE DELLA RIFINIZIONE <i>Adhesion of finishing</i>	UNI EN ISO 11644	≥ 2N/10 mm	≥ 2N/10 mm
	RESISTENZA ALLA LACERAZIONE <i>Tear resistance</i>	UNI EN ISO 3377-1	≥ 20 N	≥ 20 N
	RESISTENZA ALLA FLESSIONE - 50.000 cicli <i>Flex resistance - 50.000 cycles</i>	UNI EN ISO 5402	No rotture <i>No cracks</i>	No rotture <i>No cracks</i>
Ignifugicità Flammability	Cigarette test - Match test	UNI EN 1021-1/2	Conforme <i>Complies</i>	Conforme <i>Complies</i>
	Cigarette Ignition Resistance	NFPA 260/UFAC	Conforme <i>Complies</i>	Conforme <i>Complies</i>
	FS191 Method 5903-Port Authority of NY & NJ		Su richiesta <i>On demand</i>	Su richiesta <i>On demand</i>
	IMO A 652 (16)		Conforme <i>Complies</i>	Conforme <i>Complies</i>
	California TB 117 Section E		Conforme <i>Complies</i>	Conforme <i>Complies</i>
UNI 9175	Classe 1 <i>Class 1</i>			
Categoria di Prezzo Price Category	6 6+	7	9	

**PULIZIA E MANUTENZIONE
CLEANING AND MAINTENANCE**

Evitare la luce diretta del sole, l'esposizione a fonti di calore - Spolverare regolarmente la pelle con un panno morbido ed asciutto. Eventuali macchie si possono eliminare usando un panno inumidito con acqua e sapone neutro - Asciugare immediatamente dopo il trattamento. Non strofinare, ma tamponare delicatamente dai bordi al centro della macchia.

Avoid placing leather in direct sun, keep the leather away from direct heat - Dust regularly with a soft and dry cloth. Spots can be cleaned with a lighty damp cloth and mild soap - Dry immediately after the treatment. Do not rub. Use a light circular motion working toward the center of the stain.

**CAMPIONARIO COLORI
COLOUR SELECTION**

Il campionario delle pelli ha valore orientativo: data l'origine naturale del prodotto, gli articoli potranno presentare sfumature cromatiche diverse dal campione medesimo.

Leather is a natural material made from wild animals, will display differences from hide to hide. Changes in colour or texture of the leather are normal. Irregularities in the consistency of colour and texture should not be considered a defect but are regarded as inherent to the material.



Consigliata
Recommended



Non disponibile
Not available



**CARATTERISTICHE
FEATURES**

COLLEZIONE / COLLECTION

Caratteristiche Features	PESO (gr/ml) Weight (g/m)	EN 12127	Extrema Basic	Extrema Au	Puma Retel/Mesh	Polo Retel/Mesh
ALTEZZA (cm) Width (cm)			140	140	140	150
MARTINDALE (cicli) Martindale (cycles)	EN ISO 12947-2	150.000	150.000	150.000	40.000	100.000
XENOTEST (scala del blu) Xenotest (blue scale)	EN ISO 105-B02	5/6	5/6	5/6	5	5
CROCKMETER (scala dei grigi) Crockmeter (gray scale)	EN ISO 105-X12	4/5	4/5	4/5	4/5	4/5
Pulizia Cleaning	ACQUA E SAPONE NEUTRO Water and mild soap		•	•	•	•
	SMACCHIATORE A SECCO Dry cleaning products				•	•
	UNI 9175 classe 1			•		
	TB 117: 2013			•		
	BS 5852 CRIB 5			•		
BS 5852-1 PART I			•			
EN 1021-2			•	•		
IMO A 652 (16)			•			
Composizione Composition	100% Poliestere 100% Polyester				•	•
	63% PU, 29% Cotone, 8% Pes 63% PU, 29% Cotton, 8% Pes		•	•		
Categoria di Prezzo Price Category			3+	4		

**COMBINAZIONI
COMBINATIONS**

	Costarica	Panama	Florida	Extrema Basic/Au	Puma schienale/backrest	Polo schienale/backrest
CATEGORIA DI PREZZO PRICE CATEGORY	6/6+	7	9	3+/4		

Programma Series	Costarica	Panama	Florida	Extrema Basic/Au	Puma schienale/backrest	Polo schienale/backrest
Link Eura	■	■	■	■	■	■
Amadeus Parlament Trendy	■	■	■	■	×	×
Teorema Papillon Jolly Naxos Club	■	■	■	■	×	×
Zero7 Zero9	×	×	×	■	■	■
Première Royale Myspace Concerto Imperial	■	■	■	■	×	×
PF3	■	■	■	■	×	×
Stylos Genesis evolution Metropolitan Tempo Concerto V.9 Eidos	■	■	■	■	×	×
Omnia Woody Smart Hip-Up Thesi	×	×	×	■	×	×
Mya	■	■	■	■	×	×

leather&mesh 2016

leather&mesh 2016

ARESLINE

ARESLINE
INNOVATIVE SEATING SYSTEMS

COSTARICA

Pelle / Leather
Standard (6)
Ignifugo / Fire-retardant (6+)

PANAMA

Pelle / Leather (7)

FLORIDA

Pelle / Leather (9)

EXTREMA

Basic (3+)
Au Ignifugo / Fire-retardant (4)

PUMA

Rete / Mesh

POLO

Rete / Mesh



605(6) 635(6+)



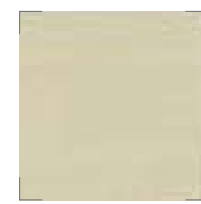
E05(7)



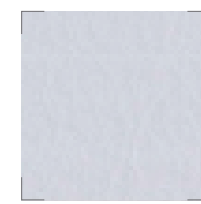
F05(9)



628(6) E10(7)



E15(7) F15(9)



F19(9)



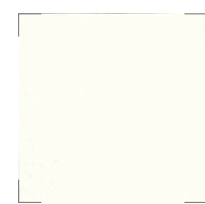
F30(9)



F34(9)



E38(7) F38(9)



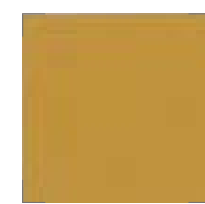
E11(7) F11(9)



E16(7) F16(9)



F20(9)



F31(9)



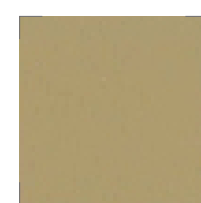
F35(9)



E39(7) F39(9)



E13(7) F13(9)



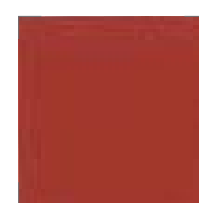
E17(7) F17(9)



F21(9)



F32(9)



F36(9)



F40(9)



F14(9)



F18(9)



F22(9)



E33(7) F33(9)



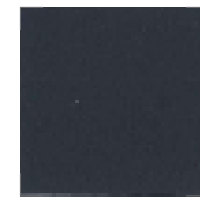
F37(9)



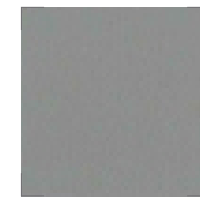
F41(9)



E45(7) F45(9)



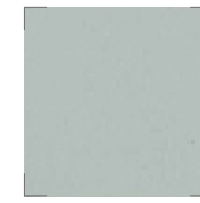
F54(9)



F60(9)



E70(7) F70(9)



F76(9)



E82(7) F82(9)



E47(7) F47(9)



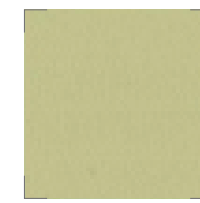
F55(9)



E61(7) F61(9)



F71(9)



F77(9)



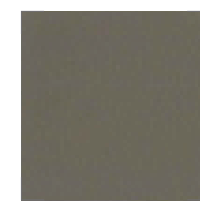
F83(9)



F48(9)



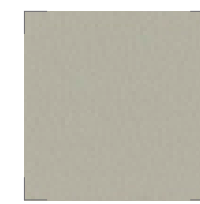
F56(9)



E62(7) F62(9)



E72(7) F72(9)



F78(9)



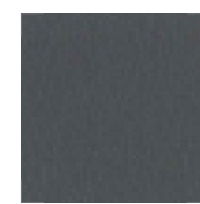
F84(9)



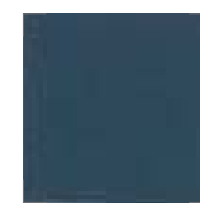
E49(7) F49(9)



E57(7) F57(9)



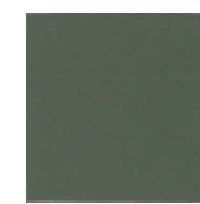
F63(9)



F73(9)



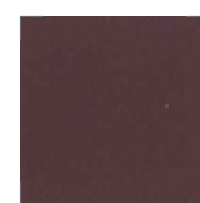
F79(9)



E85(7) F85(9)



632(6) F50(9)



F58(9)



E64(7) F64(9)



E74(7) F74(9)



F80(9)



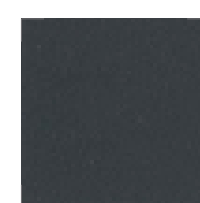
E86(7) F86(9)



E51(7) F51(9)



E59(7) F59(9)



F65(9)



F75(9)



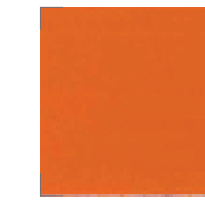
F81(9)



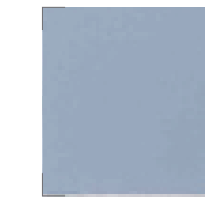
E87(7) F87(9)



671(3+) 662(4)



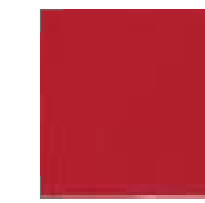
682(3+) 668(4)



670(3+) 649(4)



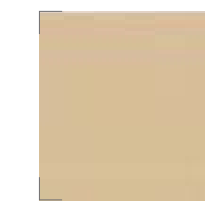
672(3+) 658(4)



685(3+) 665(4)



673(3+) 661(4)



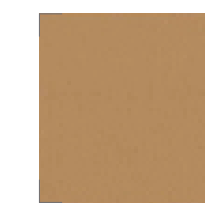
678(3+) 654(4)



679(3+) 646(4)



674(3+) 664(4)



684(3+) 648(4)



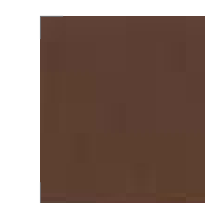
677(3+) 667(4)



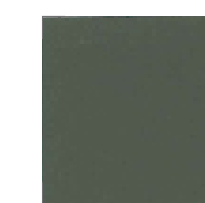
687(3+) 650(4)



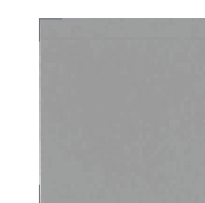
690(3+) 659(4)



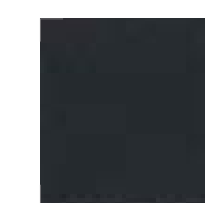
691(3+) 647(4)



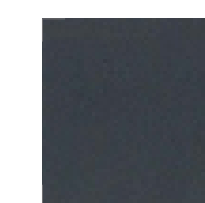
688(3+) 666(4)



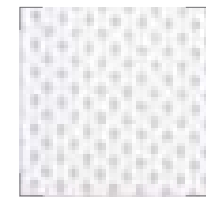
693(3+) 669(4)



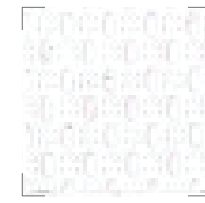
676(3+) 663(4)



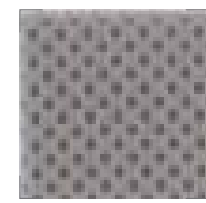
675(3+) 657(4)



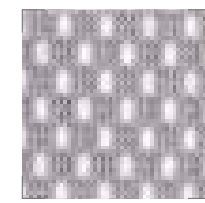
841



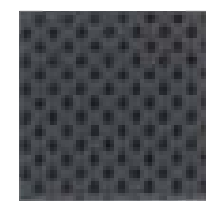
821



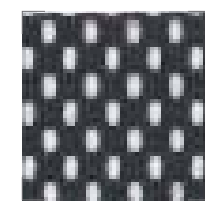
842



822



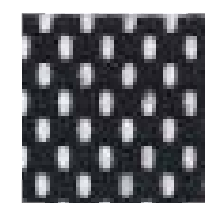
846



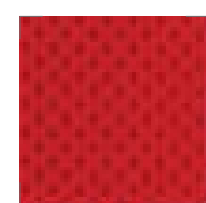
826



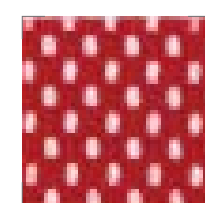
840



820



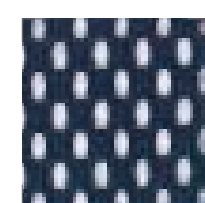
844



824



843



823